



ICAP/4 Version 8.x.11 Build 3247

One Civic Plaza Dr., Suite 470
Carson, CA 90745-7962 USA
Tel: (310) 952-0657
Fax: (310) 952-5468
Info@intusoft.com

Compatible with all 32bit and 64bit Windows including Vista!



Check www.intusoft.com for software updates!

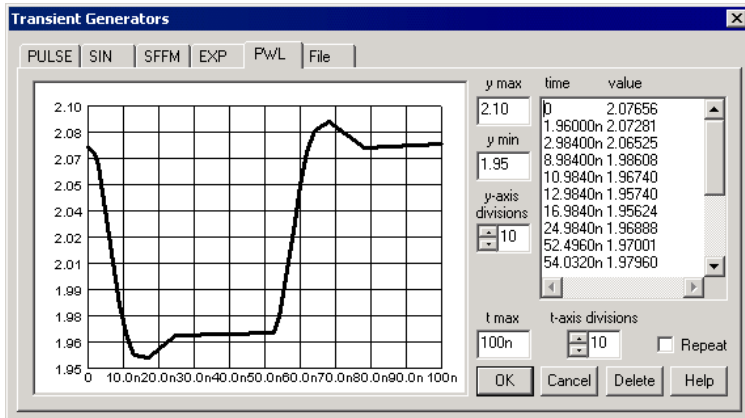
Web Download Option:

If you are currently on maintenance, you can also obtain this update via the web. Simply go to <http://www.intusoft.com/support.htm> and enter your serial number to obtain this update. Your serial number is on the "Installation Letter" that came with your initial purchase. You can also find your serial number from the Help pulldown, "About SpiceNet," then the "User Tab" dialog within the Schematic program. (Note that the ICAP/4 Consumer package does not offer maintenance.) Should you have any questions about the status of your maintenance program, please contact Intusoft at (310) 952-0657.

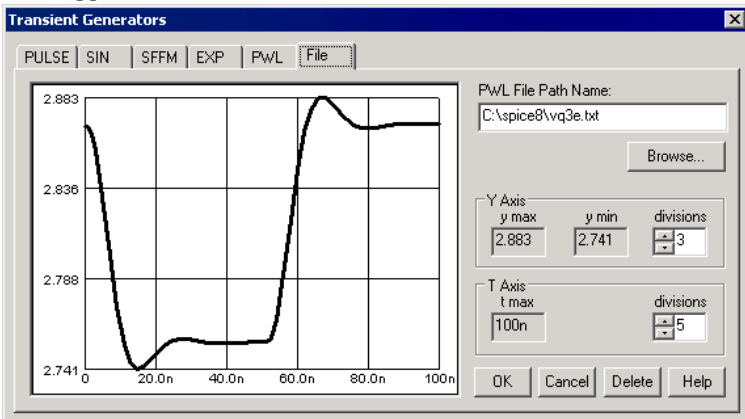
New Features and Enhancements

Note: Product features below are not necessarily available on all ICAP/4 software packages. For a more detailed list go to: <http://www.intusoft.com/products/icapscomparison.html>

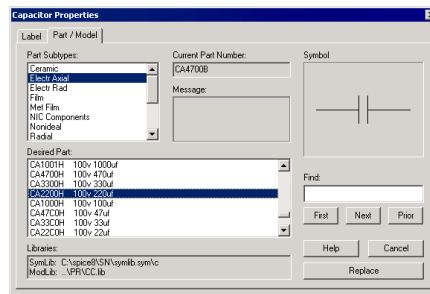
Control Transient Generator's PWL Data Points Graphically: Instead of typing time value pairs to define your PWL waveform, you can now click on a graph to place data points. Draw a bounding box around any data points, then drag and drop the bounding box to move the selected data points, or press the backspace key to delete them. The PWL tab supports undo <ctrl>+z and redo <shift>+<ctrl>+z until the waveform is back to the state it was when you selected the PWL tab.



Link to PWL .TXT File: The advantage of this File Tab over the PWL Tab is that there is no limit to the number of pairs of values that you can use. Use the Browse button to select the .TXT file that you want to link to or type the absolute path to the .TXT file and press the <tab> key. The graph on the left will automatically be sized to fit and display your data points. The PWL .TXT file can be either tab or space delimited with one time value pair on a line. Lines beginning with non-numbers are skipped.



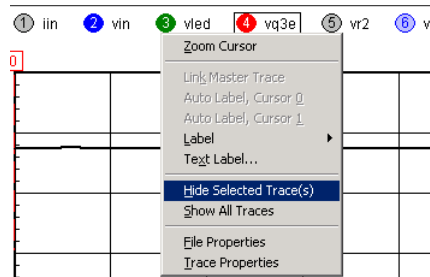
Quickly Convert Placed Parts: For supported part types a



"Part / Model" tab has been added to the Part Properties dialog that lists all available parts of that part type. Use this tab to replace generic parts or many real parts, to similar real parts. This feature accommodates resistors, inductors, capacitors, diodes, BJTs, JFETs, and MOSFETs.

Pspice to IsSpice4 Converter Improved: Based on user feedback we have further refined this product's capability.

Legend Distinguishes Selected Waveforms and Hides Multiple Waveforms: Hold down the <shift> key and click on the ID in IntuScope's legend to add or remove waveforms from your selection. Cut, copy, paste, delete and re-size multiple waveforms simultaneously.



We now only highlight the legend tags of selected traces to make it easier to determine which waveforms will be affected. You can also right mouse click in the legend and choose "Hide Selected Trace(s)" with the <shift> key down to hide multiple waveforms all at once.

Four Parameters Added to IsSpice4's Diode Model for Pspice Compatibility:

- TRS1, "1st order RS temperature coefficient"
- TRS2, "2nd order RS temperature coefficient"
- TBV1, "1st order BV temperature coefficient"
- TBV2, "2nd order BV temperature coefficient"

SpiceNet's Simulation Control Vector and Fault tabs Improved:

In the Simulation Control dialog, the Vector and Fault tabs were changed. You can now select a group of items and each individual item will change to its opposite state when you press the switch state button. The "can't fail" check box has been removed from the Part Properties dialog's Fault tab so faults are now exclusively controlled in the Simulation Control dialog.

Keep your Maintenance Current to Receive Tech Support and the Next ICAP/4 Release!